

ASC2/DSC2 Self-Aligning Mount

FEATURES

- Capacities: 20 to 50T
- Anti-rotation design
- Self-aligning construction
- Hardened stainless steel
- Allows $\pm 5^\circ$ alignment

APPLICATIONS

- Weighbridges
- Process weighing

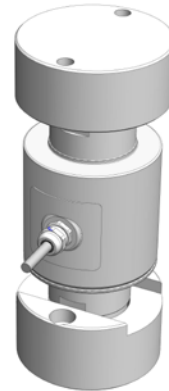
DESCRIPTION

The ASC2/DSC2 self-aligning set provides a simple but effective weighing assembly suitable for truck scales, rail scales, and process weighing applications.

It is specially designed to be used in weighbridges without stay or check rods. Eccentric washers can be

supplied to ensure that the load cell is placed in a vertical position, perpendicular to its mounting surfaces.

Long-term stability is assured through the use of hardened corrosion resistant stainless steel throughout.



OUTLINE DIMENSIONS in millimeters [inches]

